

DETAILS OF NEW END POST  
(Post at other end of bridge opposite hand to above)

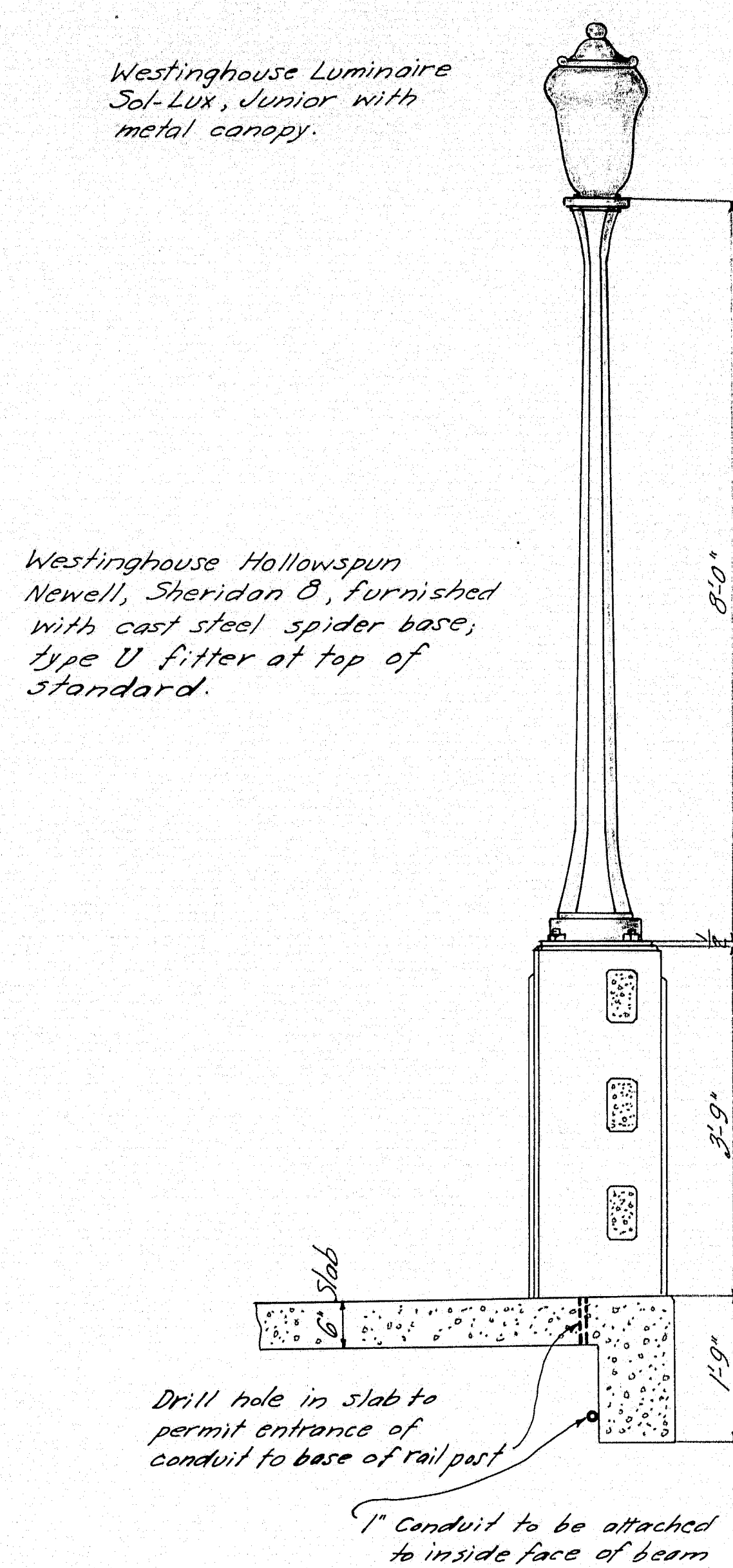
## NOTES

Four lights are to be located along sidewalk railing on downstream side of bridge, one at each abutment, the other two placed to give approximately equal spacing between lights. State will install conduit, standards and luminaires and make alterations in railing necessary to provide larger rail posts of size adequate for bases of standards; wiring and lighting is to be done by Town of Mattawamkeag.

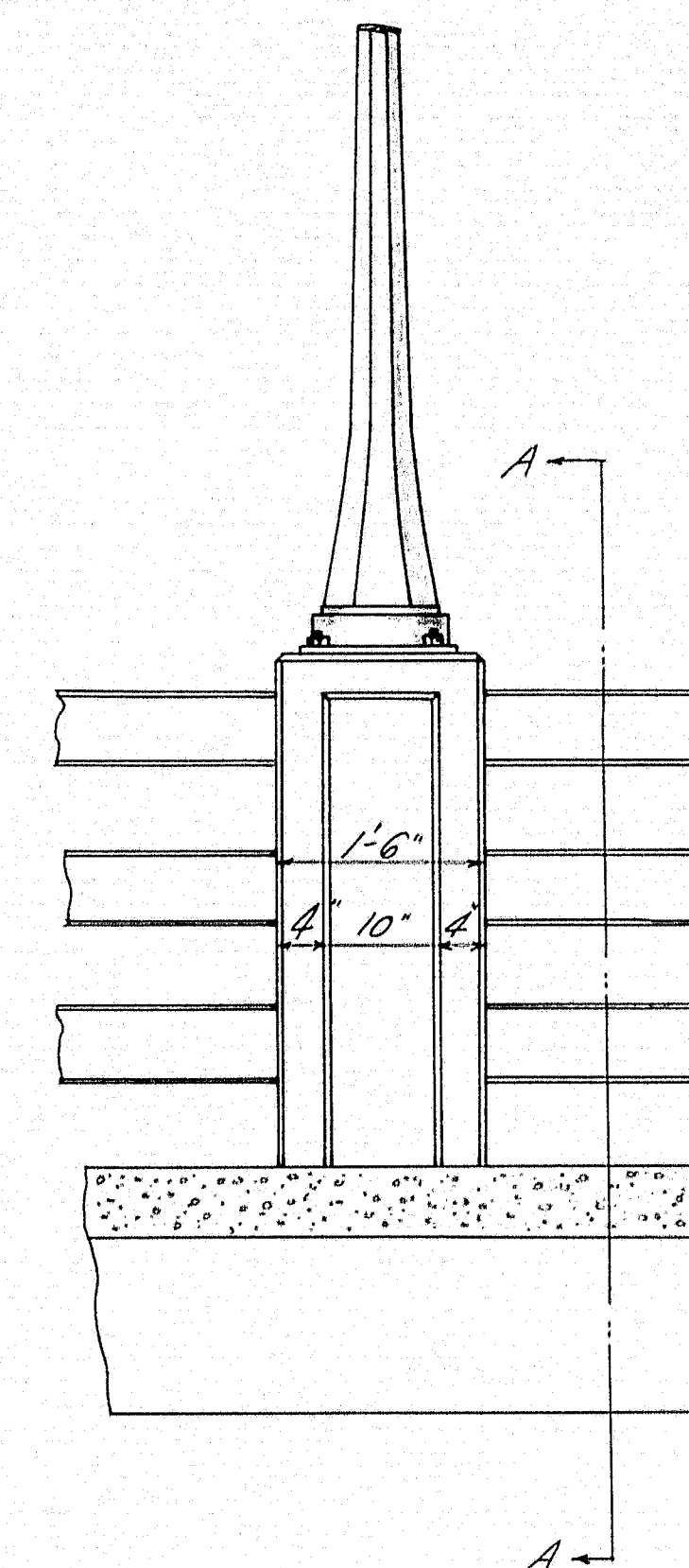
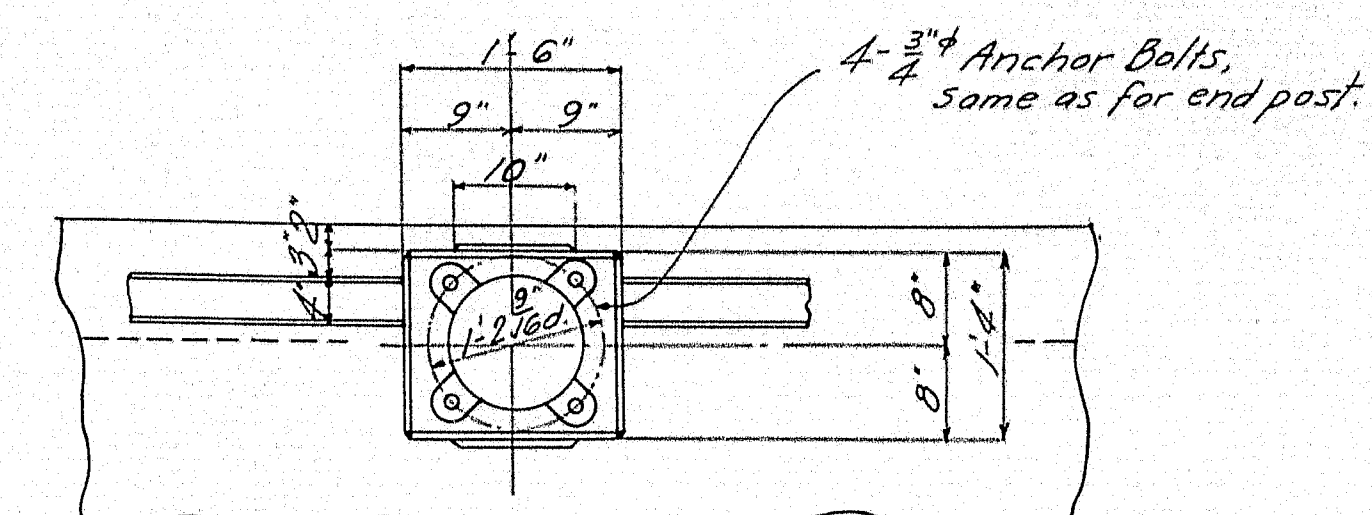
The existing posts at light locations are to be demolished and rebuilt as shown on this plan. Existing post dowels are to be utilized and additional dowels provided. Existing rail bars are to be altered as necessary. See 1928 plans, Sheet 3 of 3, for railing details.

Conduits are to be placed in posts as may be required, this information to be furnished by Bangor Hydro-Electric Company.

Westinghouse Luminaire  
Sol-Lux, Junior with  
metal canopy.



TRANSVERSE SECTION A-A



**DETAILS OF NEW INTERMEDIATE POST**  
(Two intermediate posts required, each at Post #13 from  
end post, counting end post as #1).

Rw  
LSC

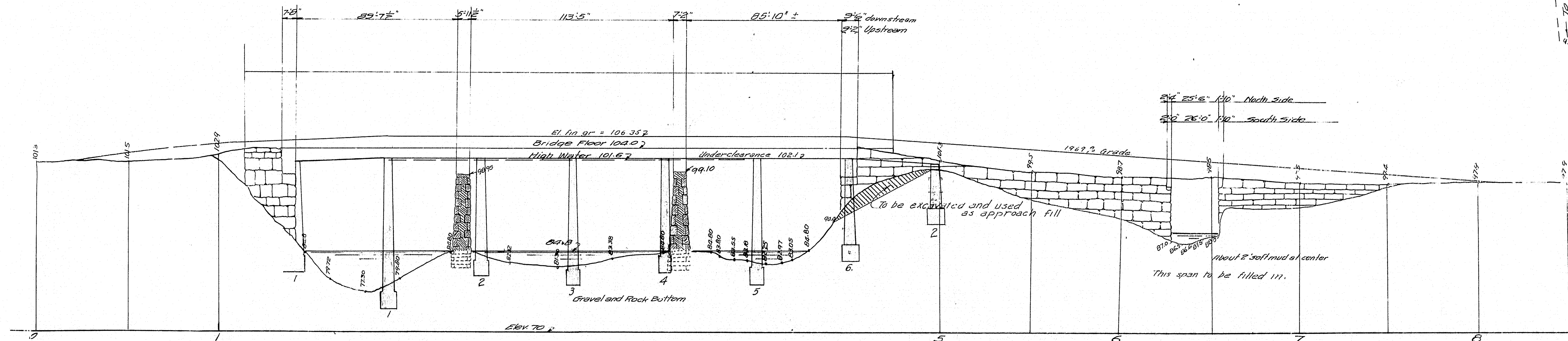
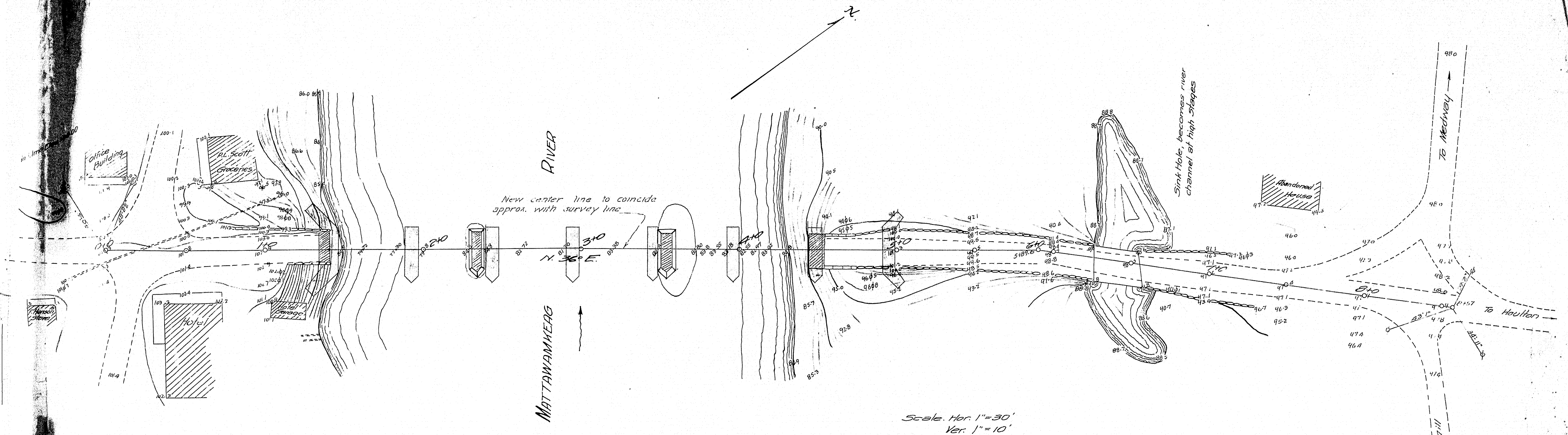
TOWN	10-44
BRIDGE	2522

STATE HIGHWAY COMMISSION  
BRIDGE DIVISION  
MATTAWAMKEAG BRIDGE  
OVER  
MATTAWAMKEAG RIVER  
IN THE TOWN OF  
MATTAWAMKEAG. PENOBSCOT CO.  
BRIDGE LIGHTING

Sheet 1 of 1      Augusta, Me., May, 1940.

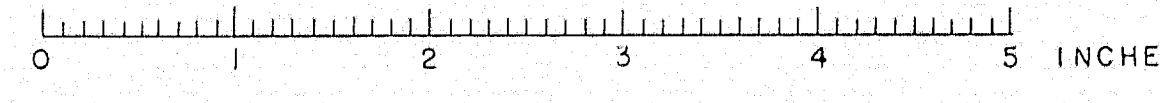
Sheet 1 of 1      Augusta, Me., May, 1940.



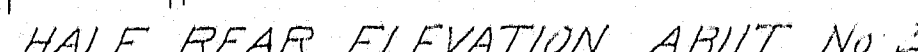
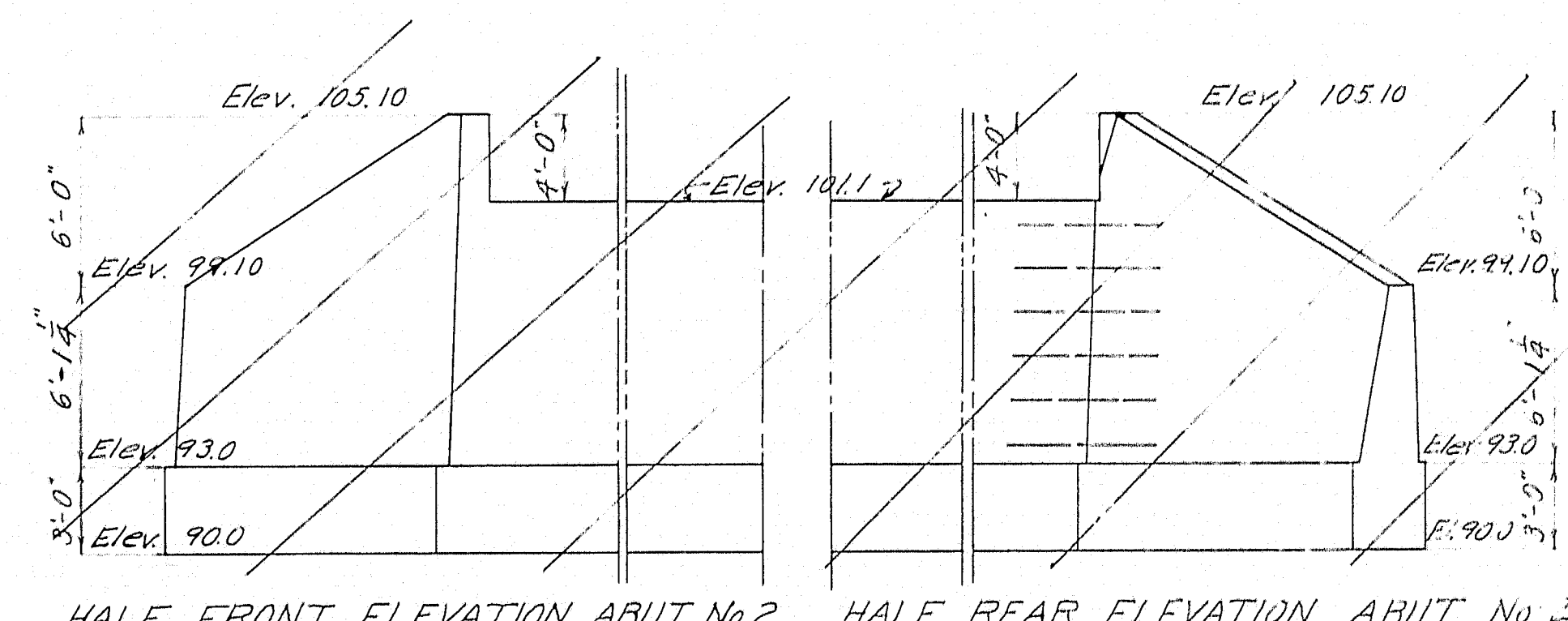
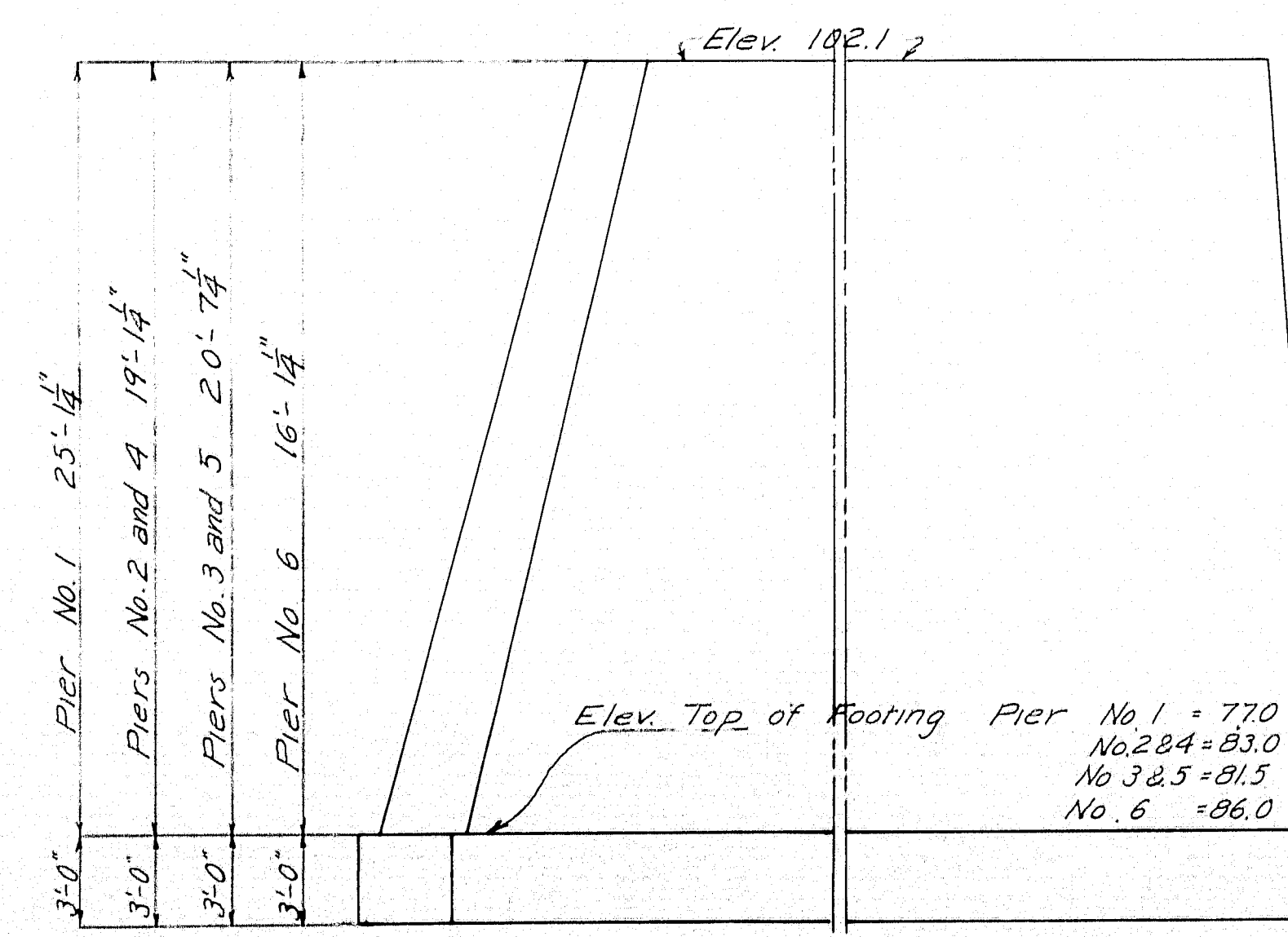
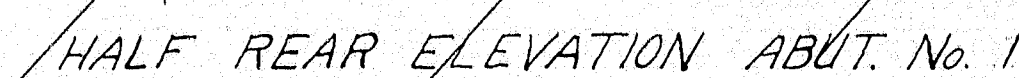
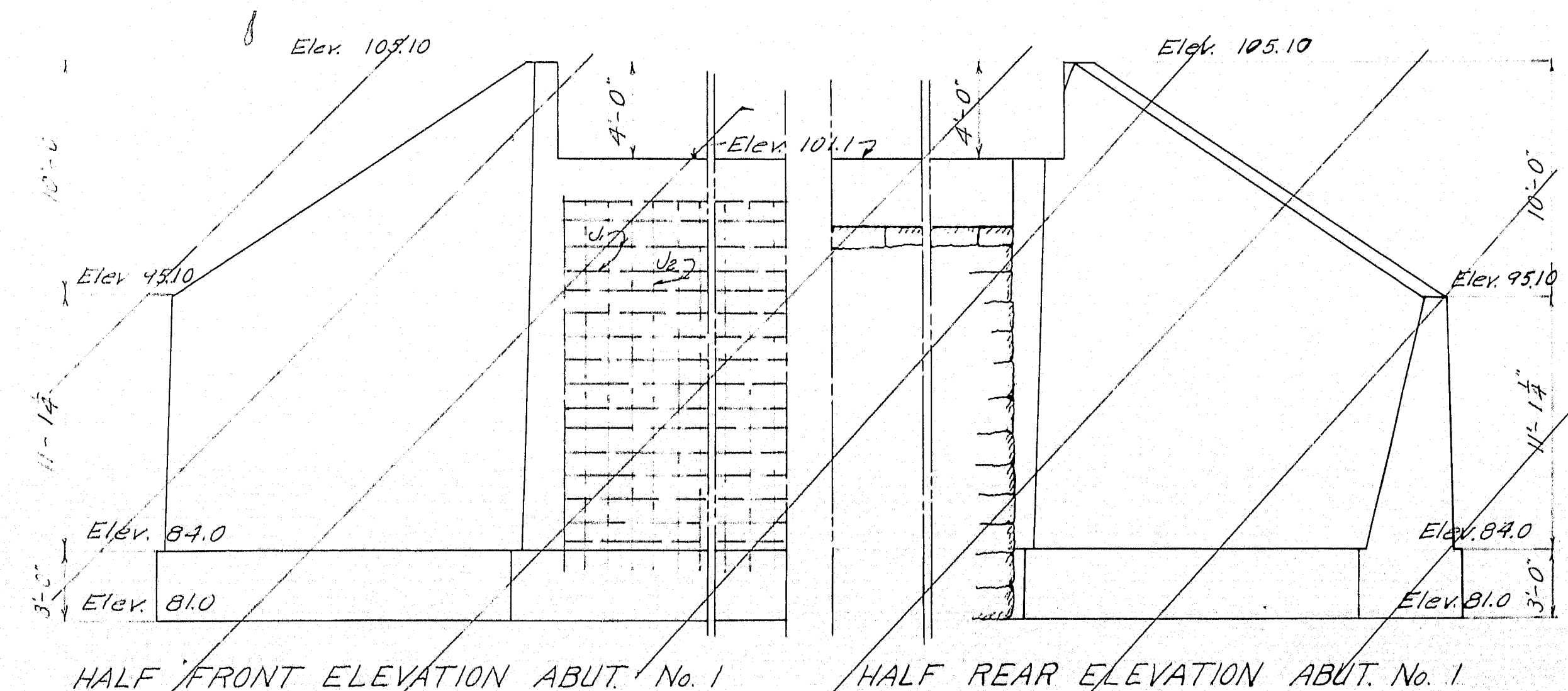
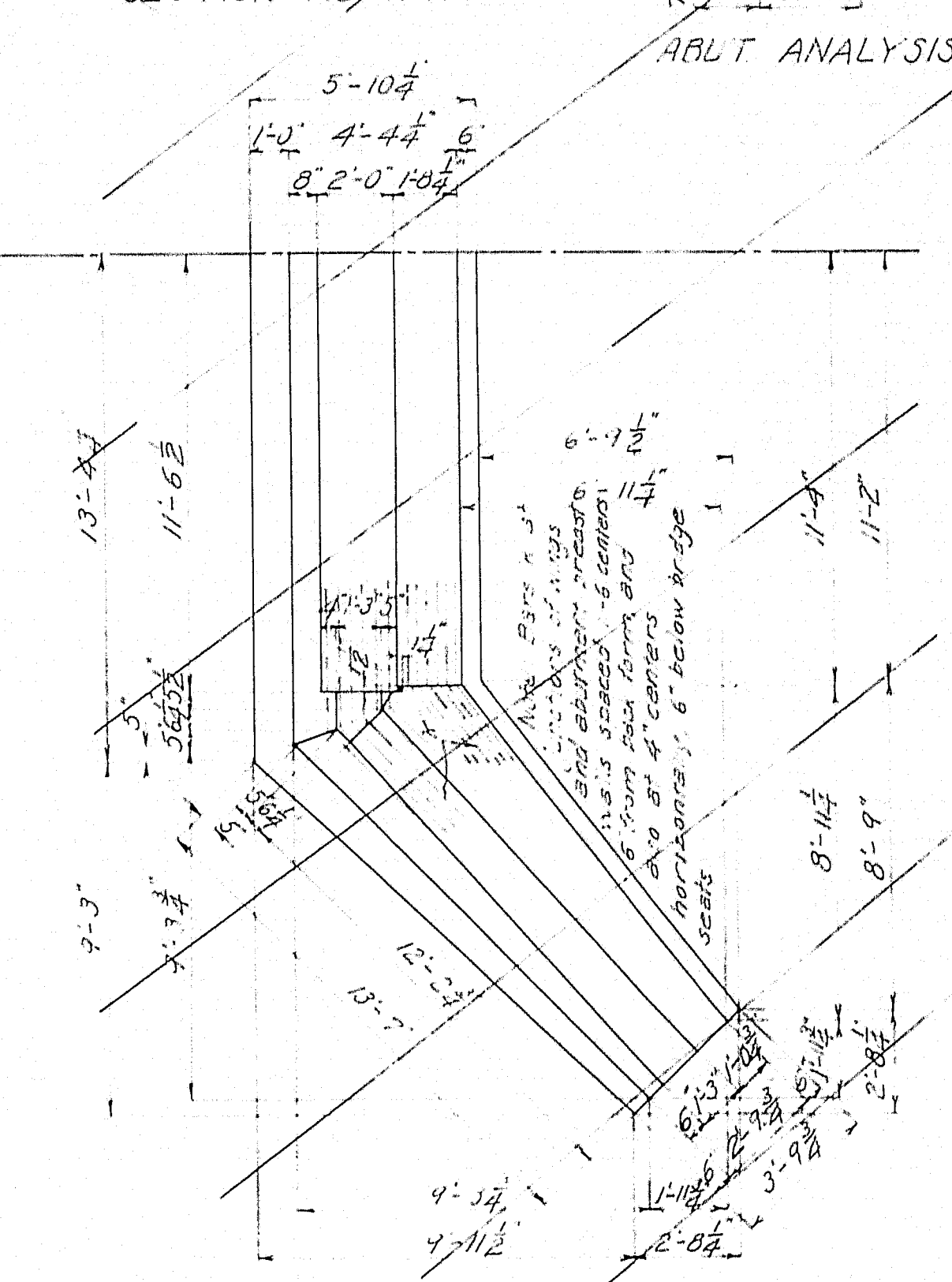
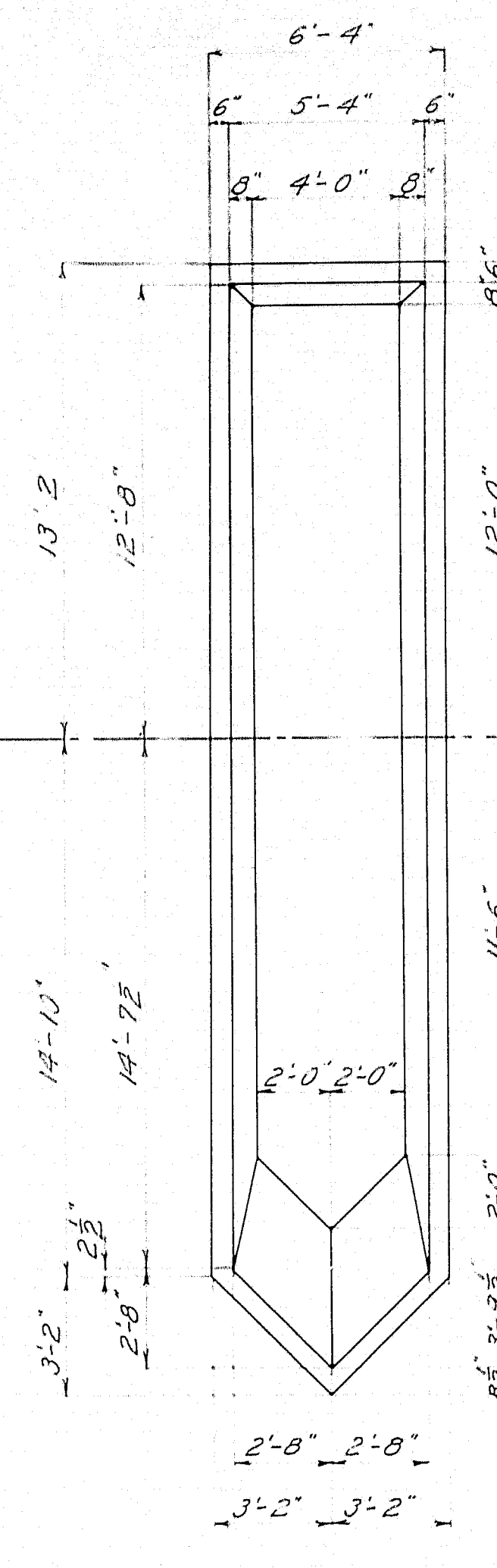
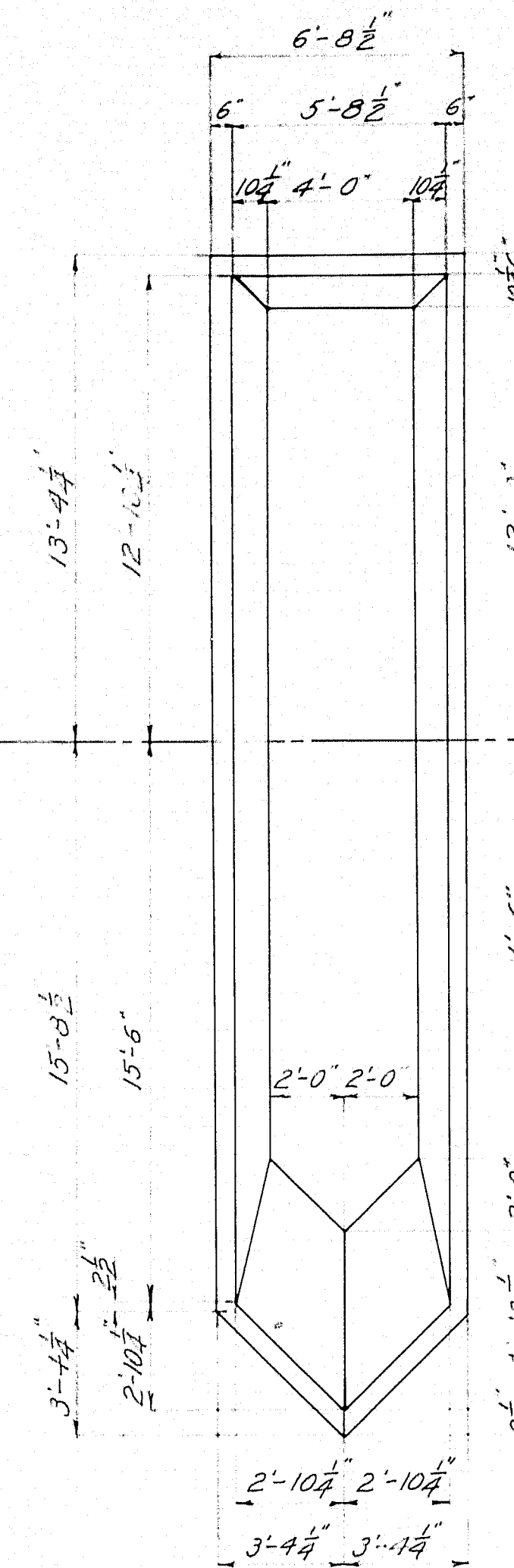
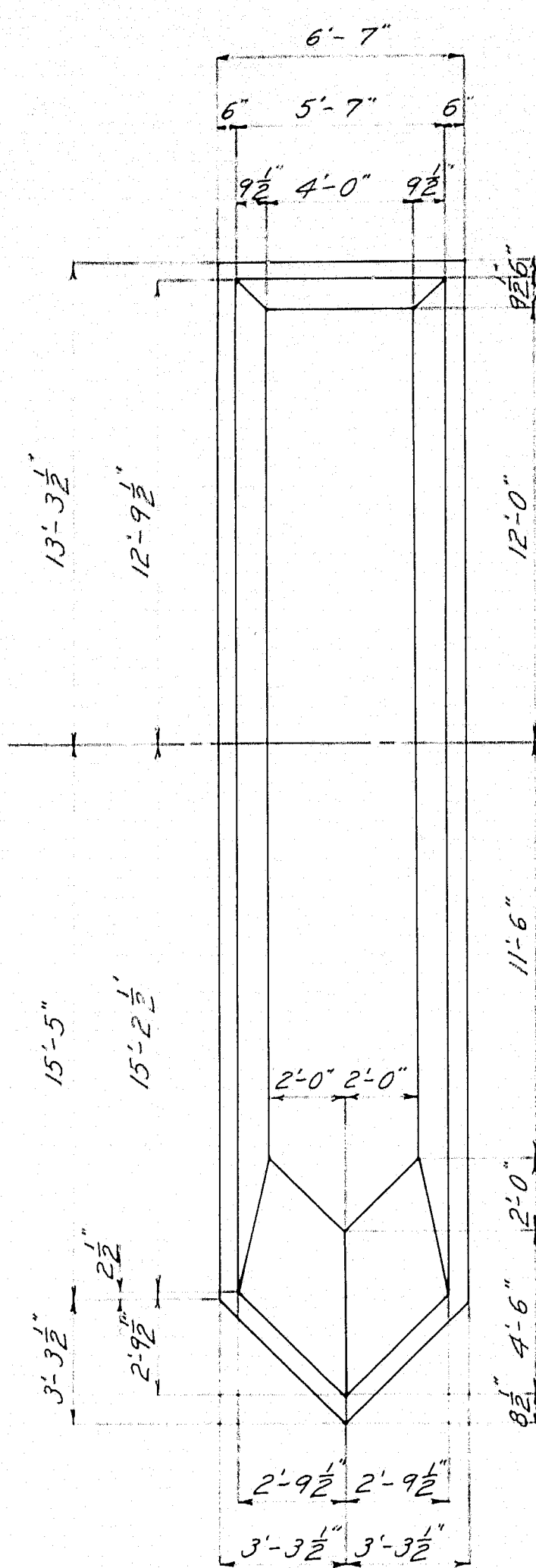
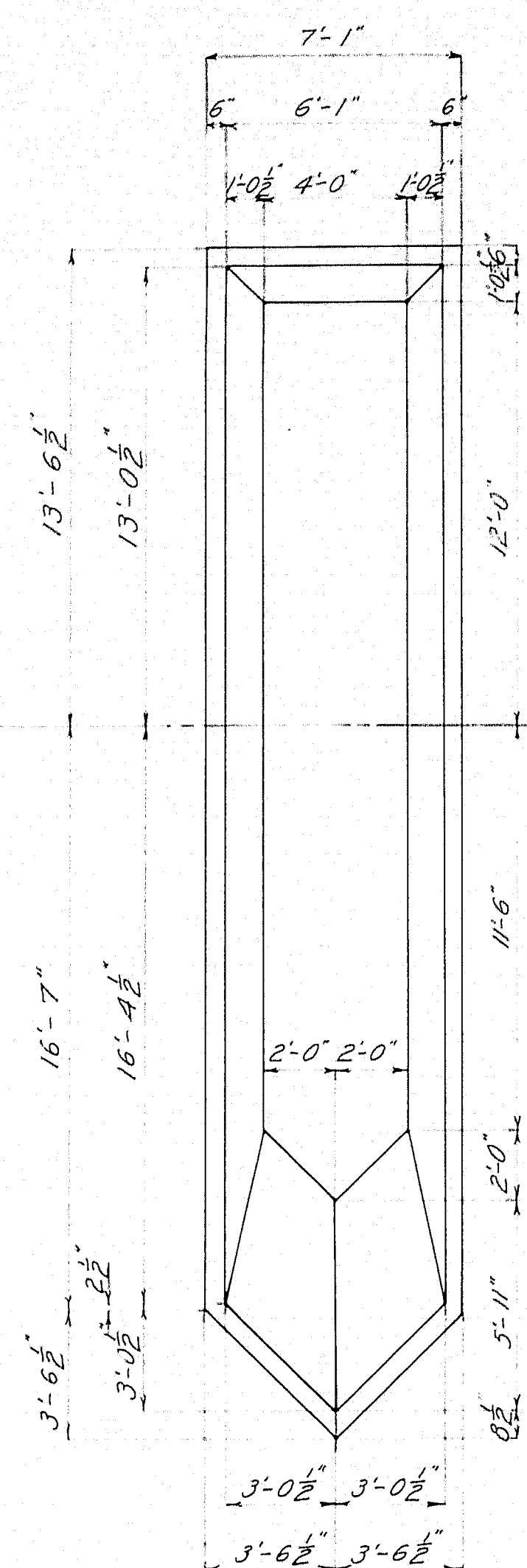
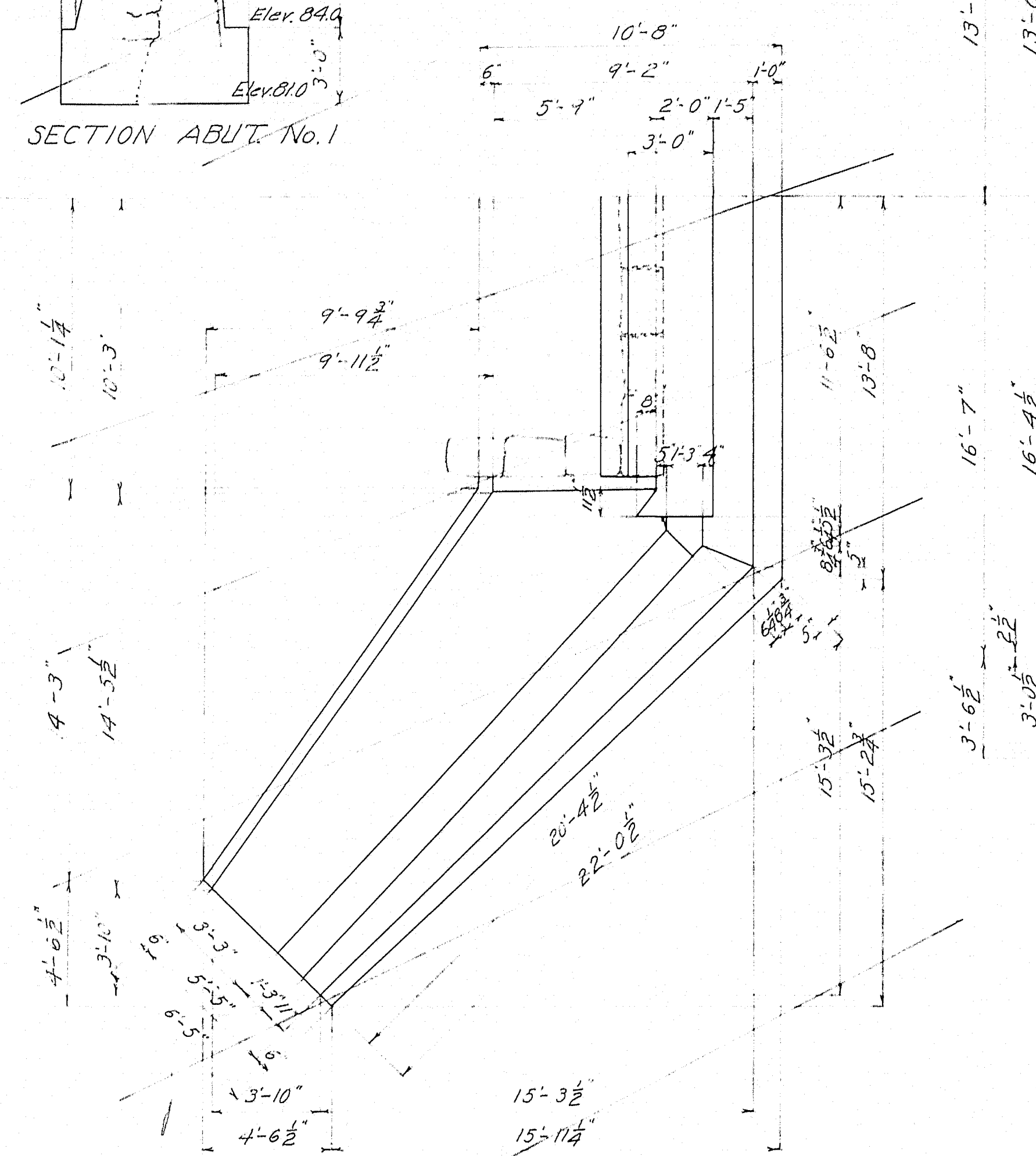
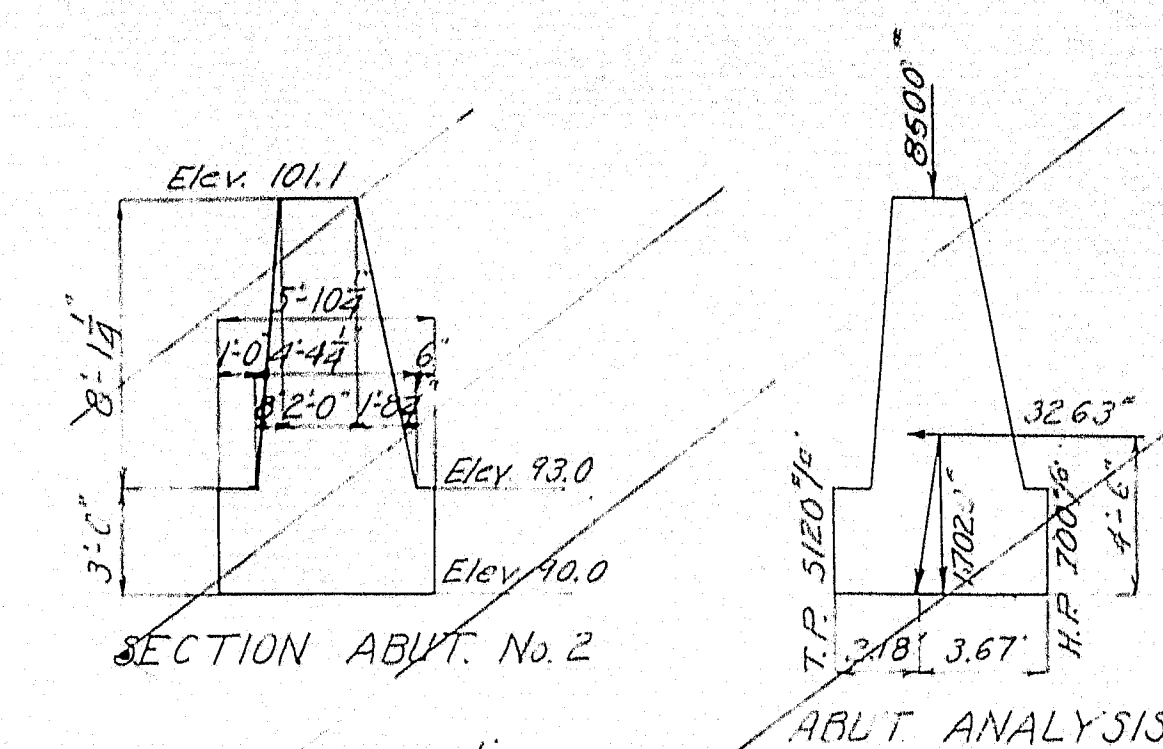
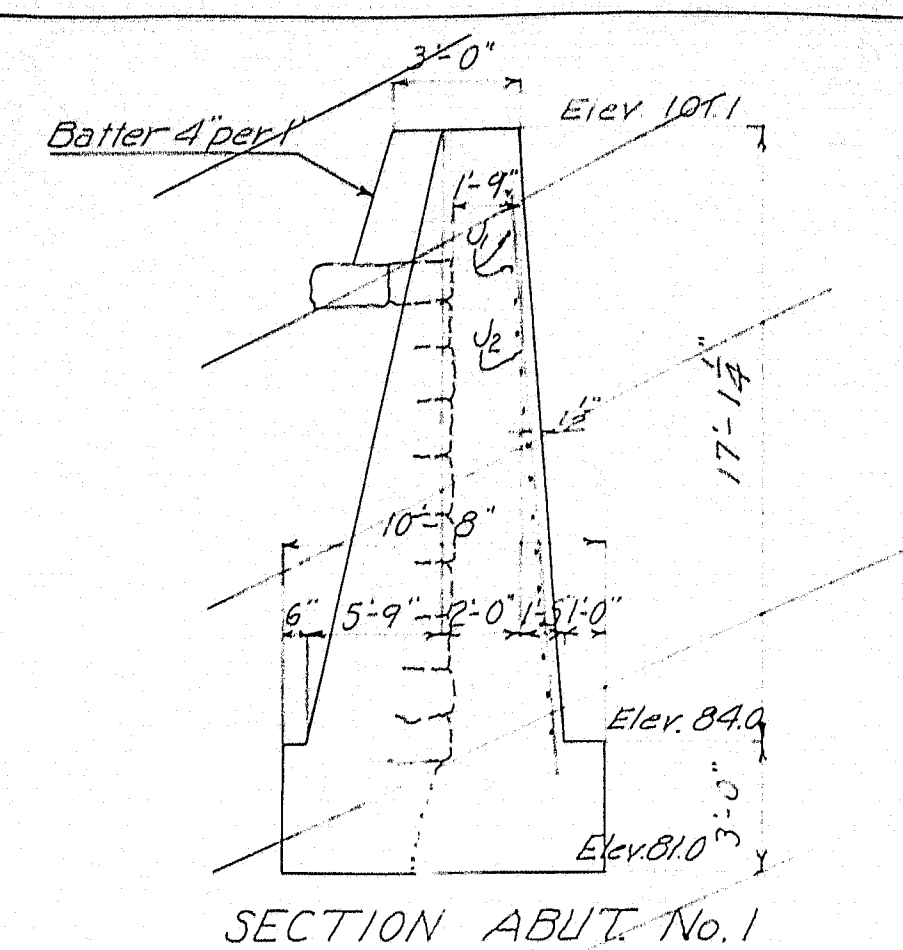


Note: The quarried stone in the existing abutments and piers is to be removed and stored at a location suitable for reloading. The distance to the location of storing will not exceed 1000 feet from the bridge site.

STATE HIGHWAY COMMISSION  
BRIDGE DIVISION  
BRIDGE OVER  
**MATTAWAMKEAG RIVER**  
IN THE TOWN OF  
**MATTAWAMKEAG**  
**PENOBSCOT CO. ME.**  
SURVEY PLAN SHEET 1 OF 3 NOV. 1924







*MAINE HIGHWAY COMMISSION  
BRIDGE DIVISION*

*MATTAWAMKEAG BRIDGE  
OVER  
MATTAWAMKEAG RIVER  
IN THE TOWN OF  
MATTAWAMKEAG  
PENOBSCOT CO. ME.  
SUBSTRUCTURE DETAILS*

Sheet 2 of 3 Augusta Me Jan. 21, 1928

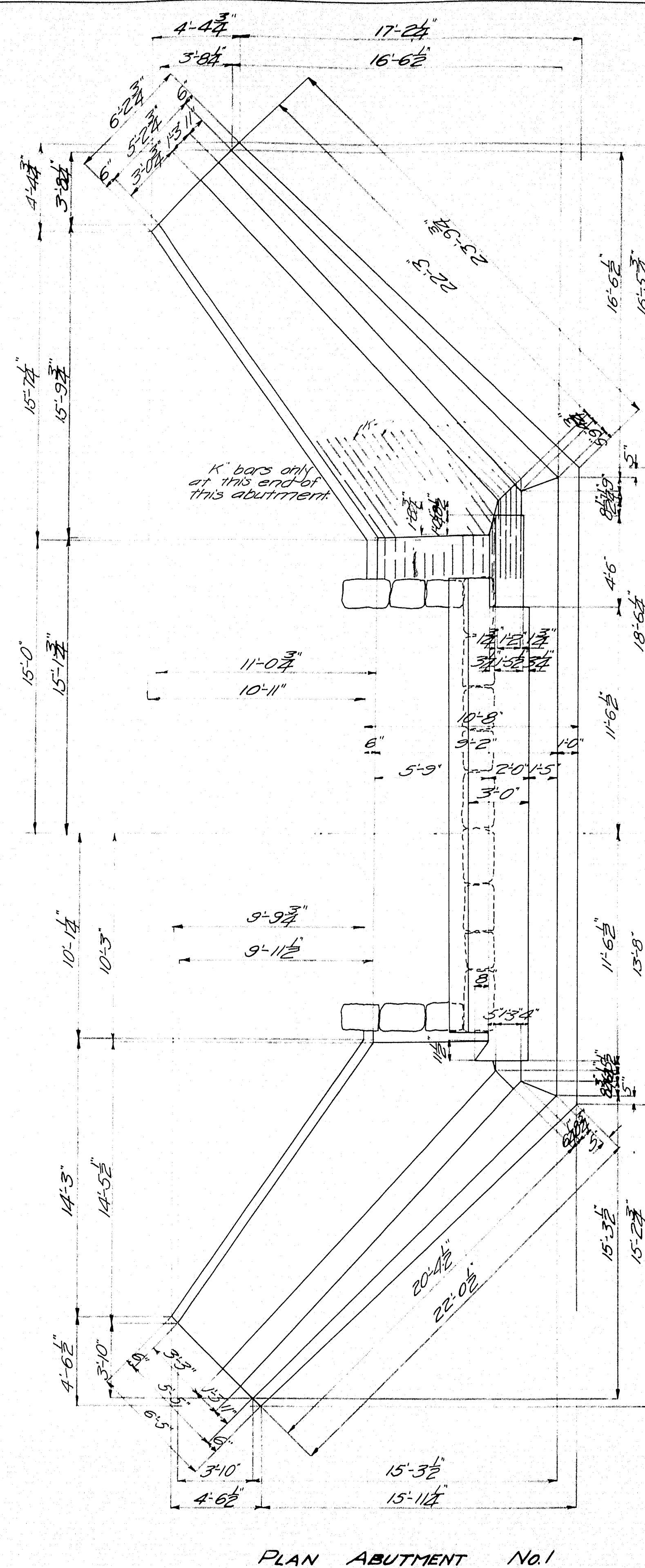




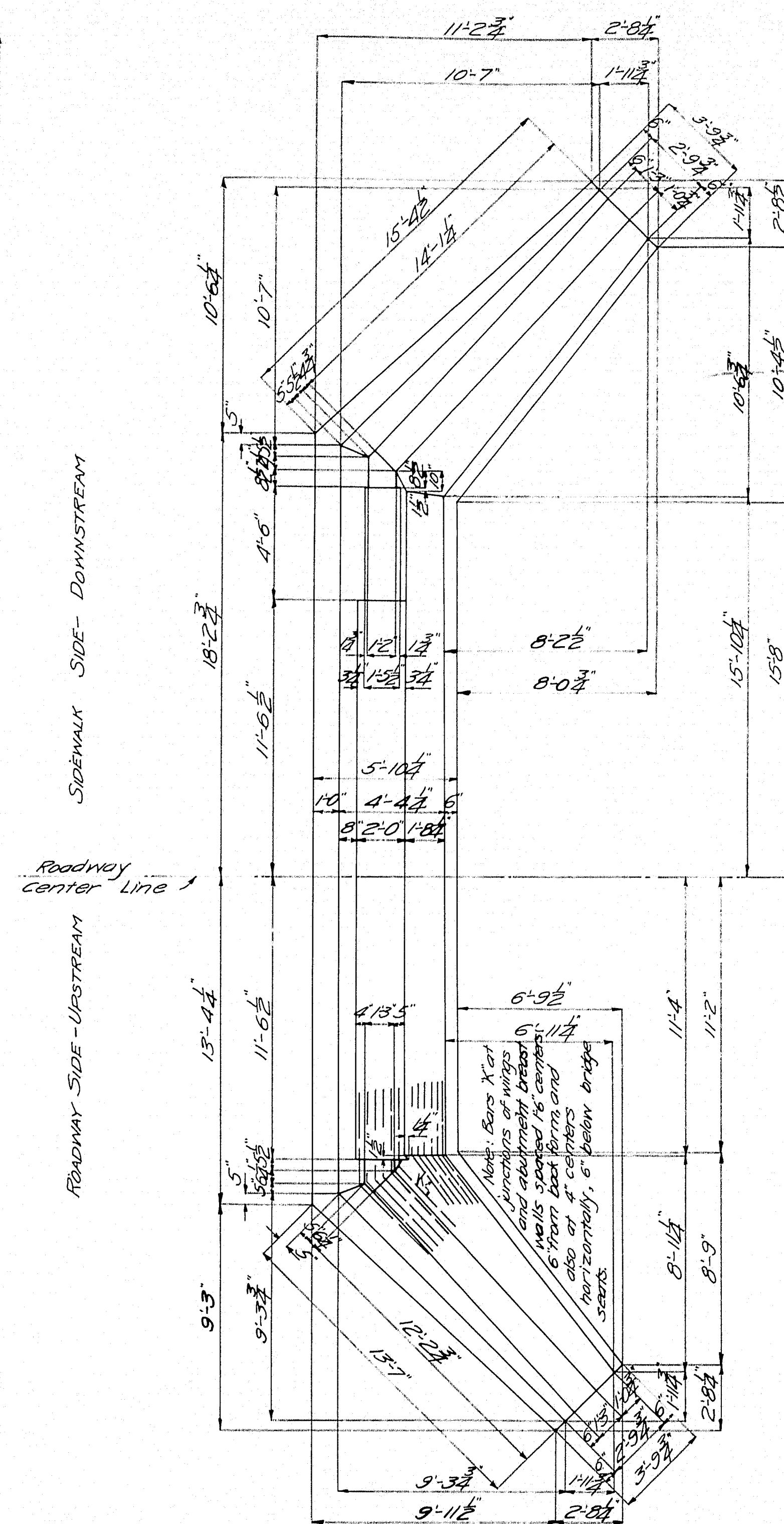




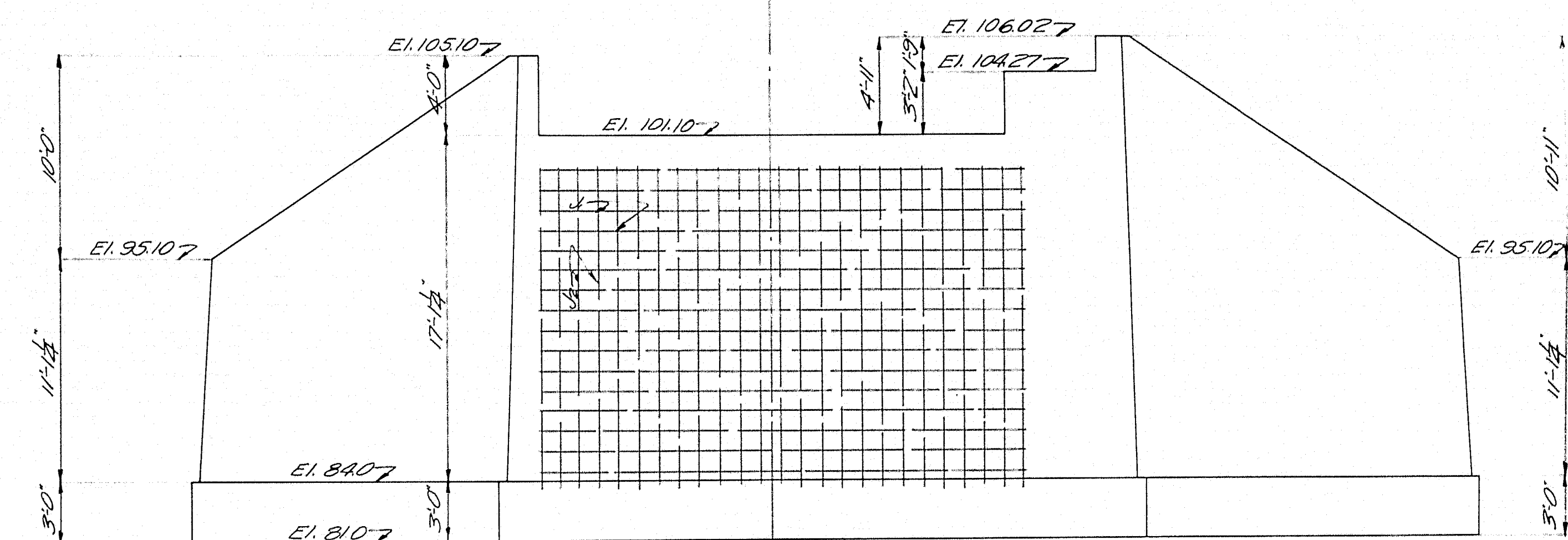
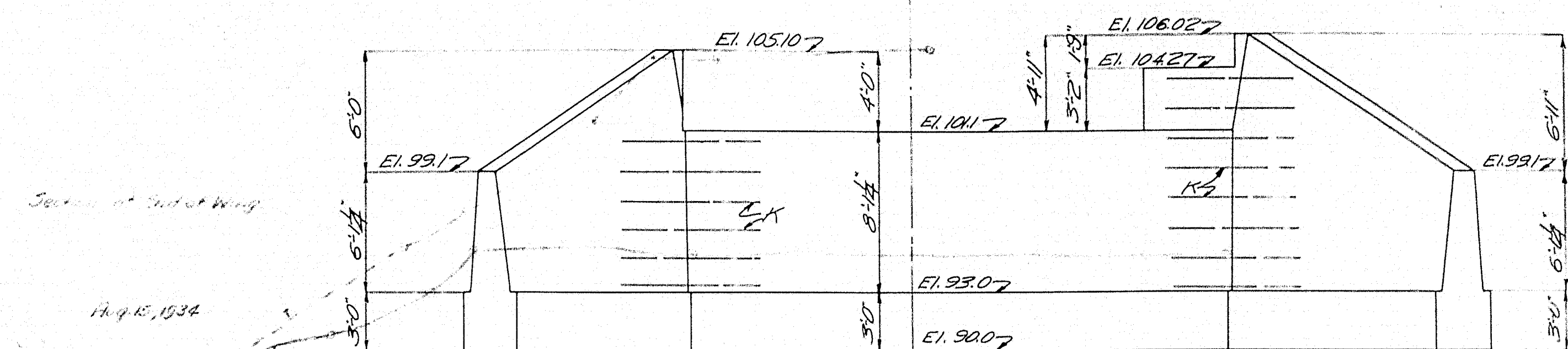




PLAN ABUTMENT No. 1

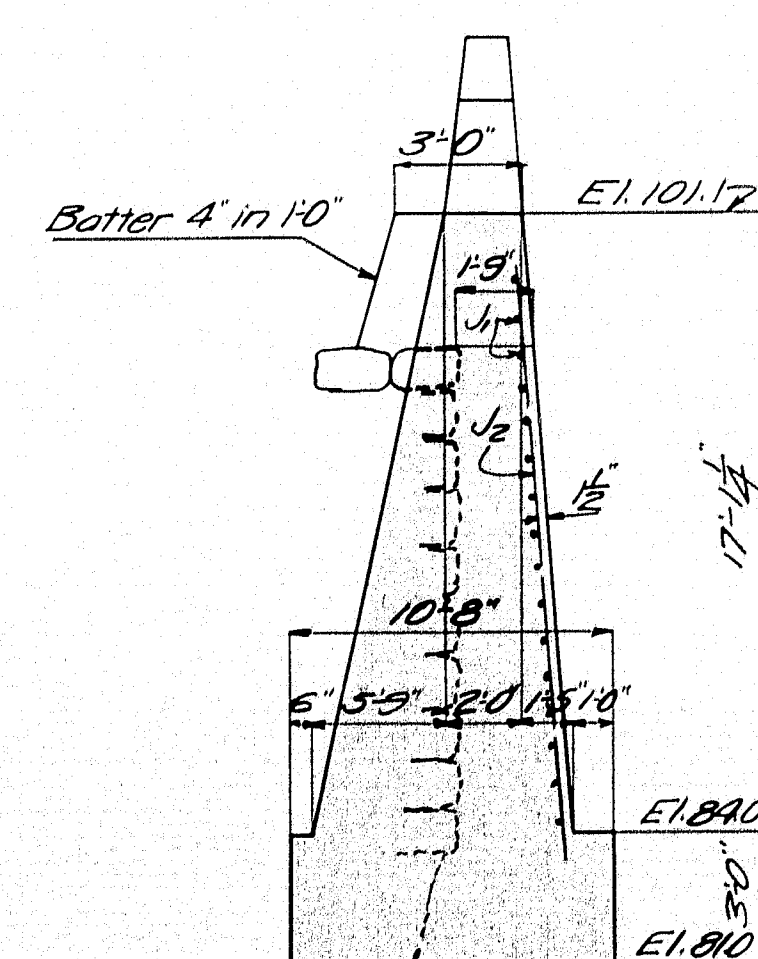


PLAN ABUTMENT No.2

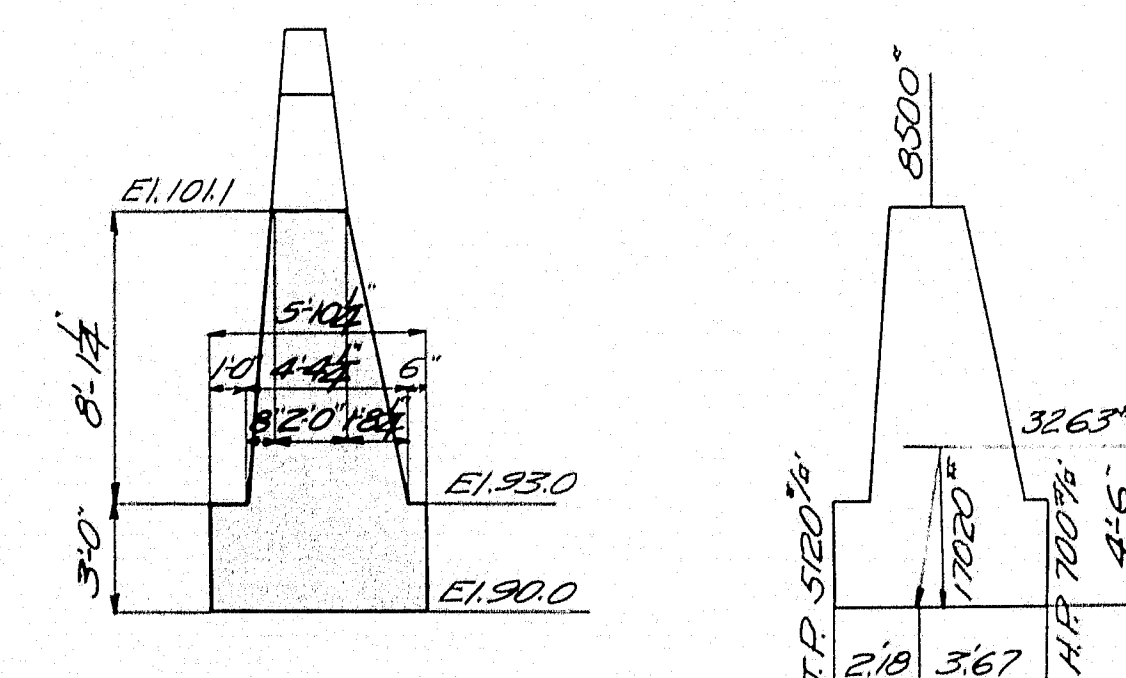


J-Bars spaced 1'-0" centers.

ROADWAY SIDE	SIDEWALK SIDE



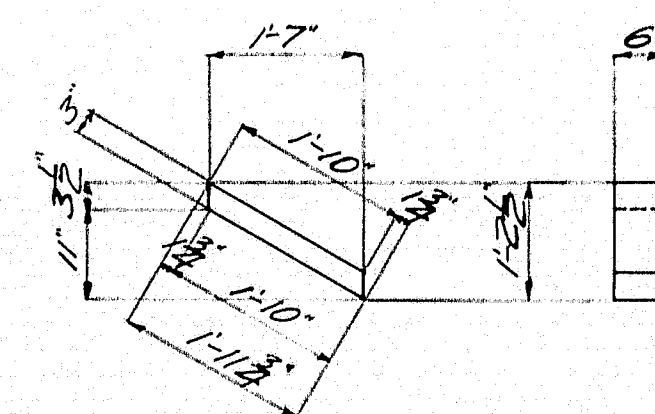
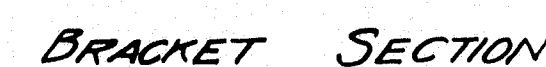
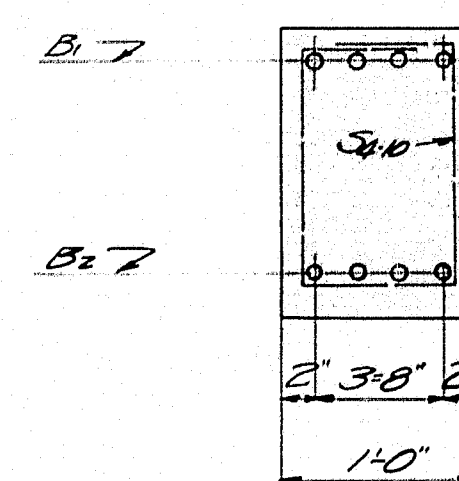
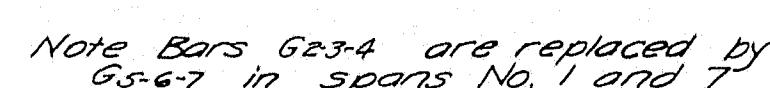
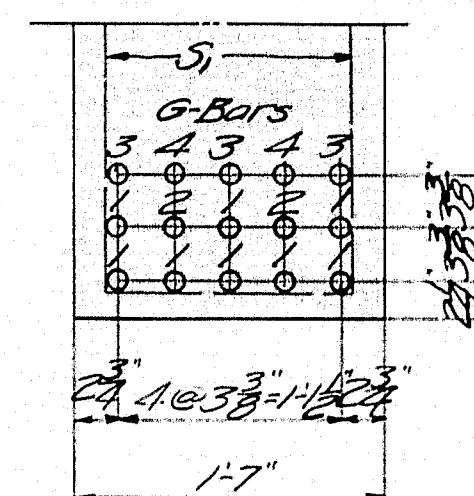
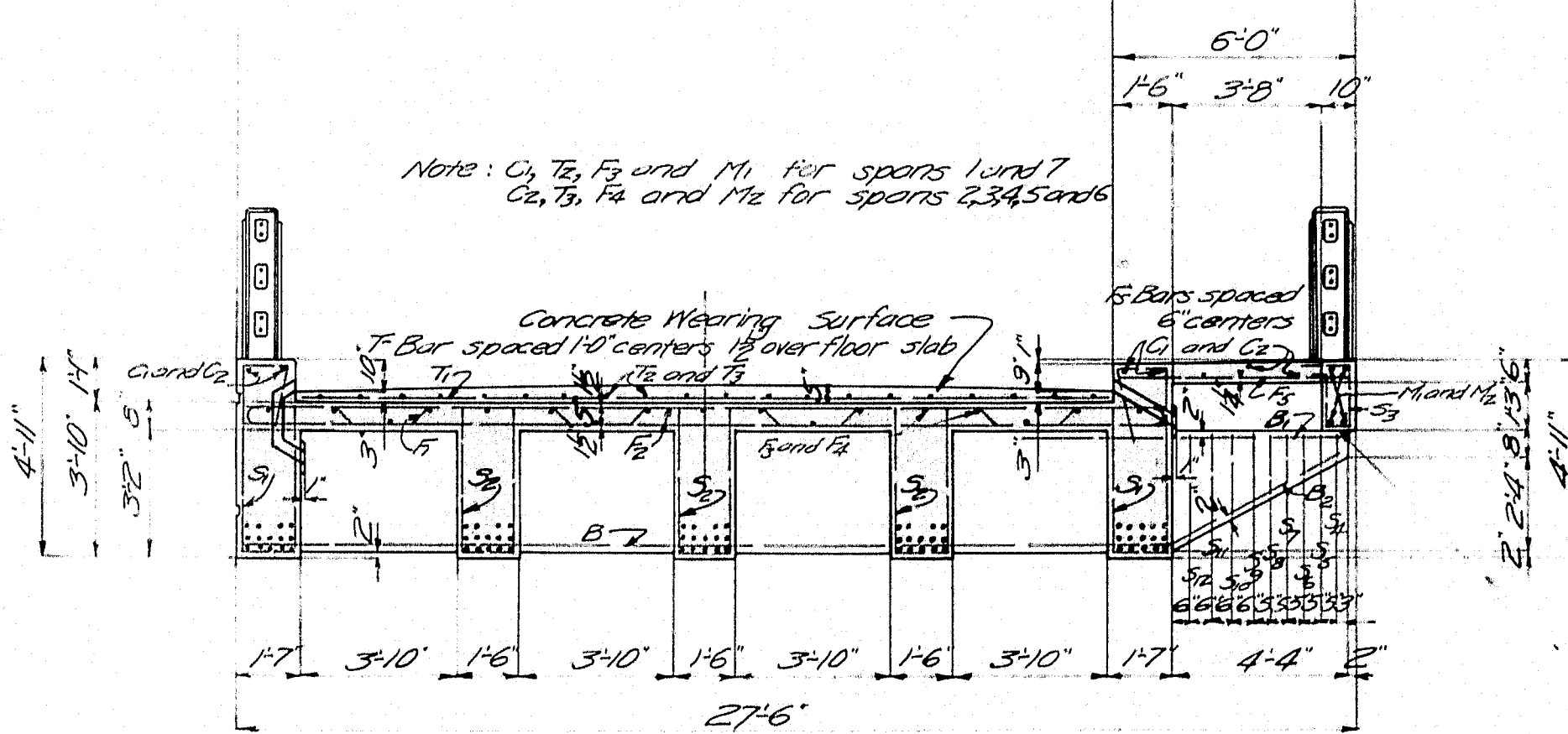
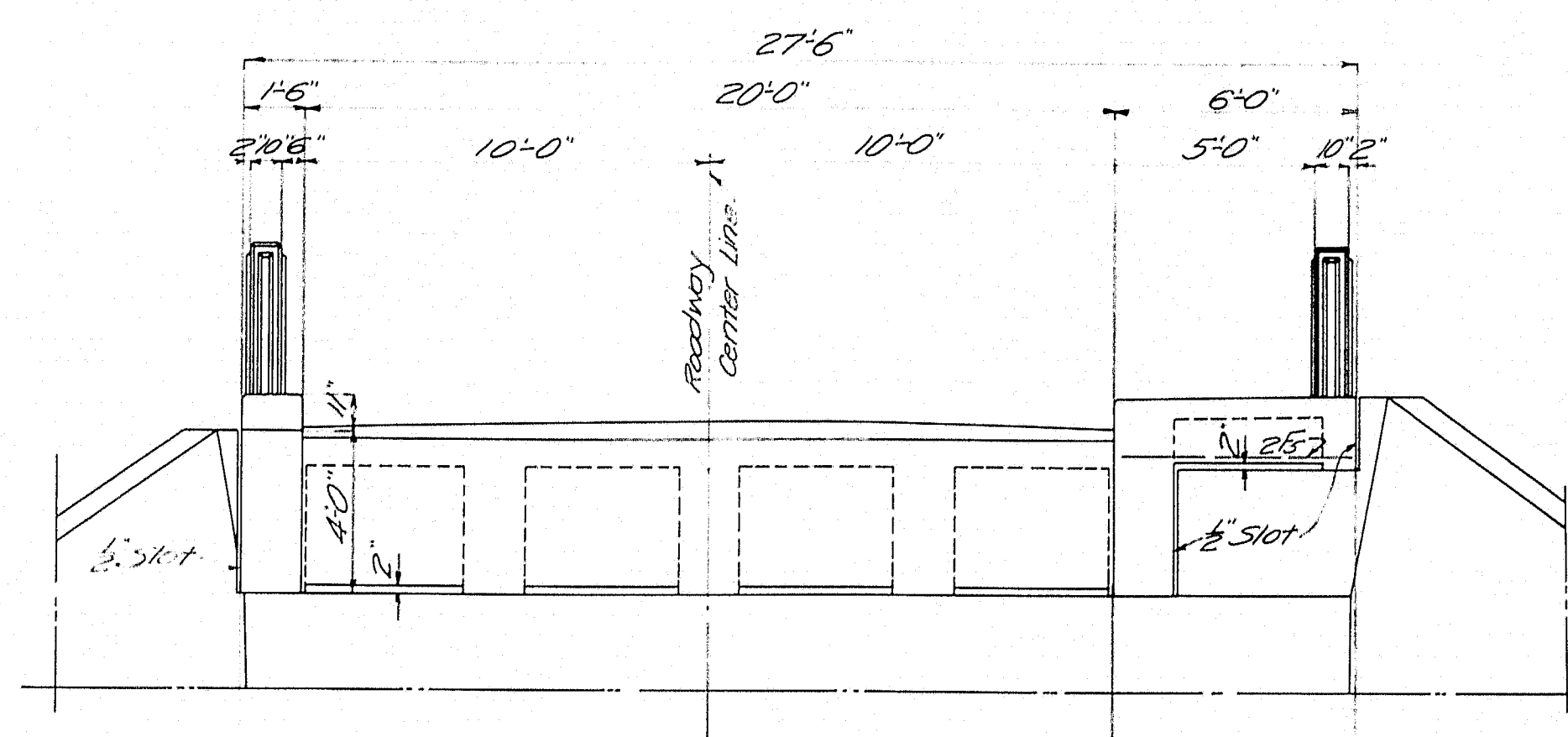
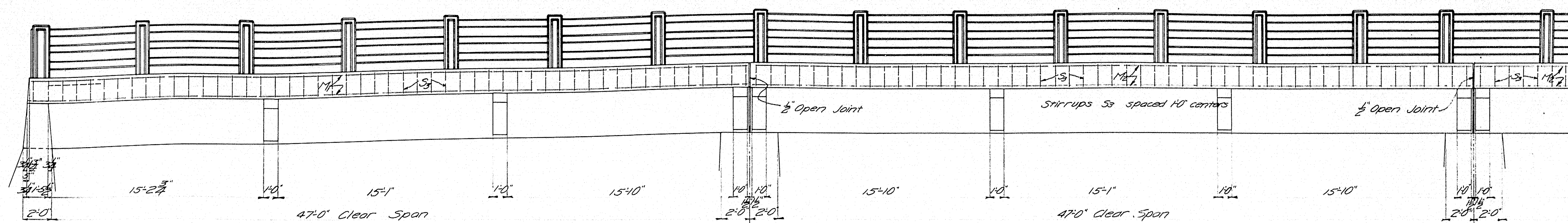
SECTION ABUTMENT No.1



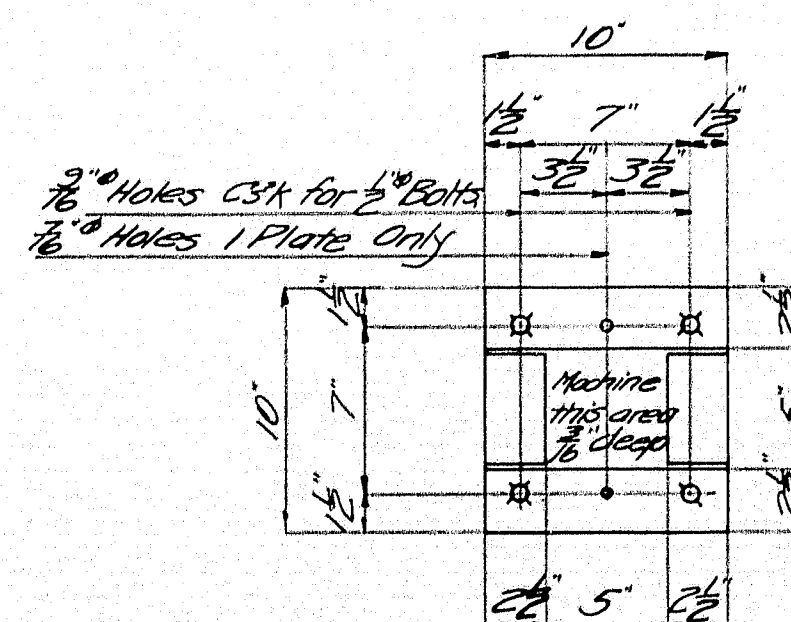
SECTION ANALYSIS  
ABUTMENT No.2

MAINE HIGHWAY COMMISSION  
BRIDGE DIVISION  
MATTAWAMKEAG BRIDGE  
OVER  
MATTAWAMKEAG RIVER  
IN THE TOWN OF  
MATTAWAMKEAG  
PENOBSCOT CO. ME.  
ABUTMENTS REVISED  
Sheet 2 of 3 Augusta Me June 18, 1928





METAL DRAIN FORM  
SIDEWALK SIDE  
7 Required



REQUIRED

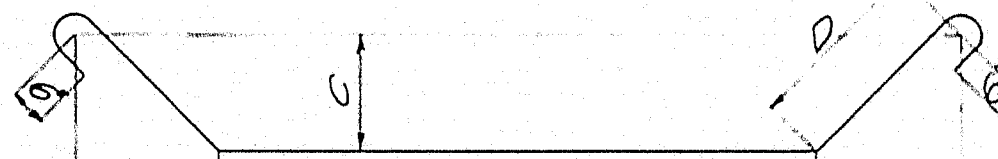
2 Steel Plates  $10 \times \frac{3}{4} \times 0-10"$   
2 Phosphor Bronze Plates  $4\frac{1}{2} \times \frac{3}{8} \times 0-4\frac{1}{2}"$   
8 Bolts  $\frac{1}{2} \times 0-10"$  with nuts csk heads and  
threaded full length.

Grooves in steel plates to be cut  $\frac{3}{16}$ " to  $\frac{1}{2}$ " deeper than bearing area to allow machining of bearing area.  
Bronze plates to be finished smooth and true either by rolling or by a final finishing cut.

ON BEARING DETAILS - FASCIA GIRDER

Expansion plates will be furnished by the Commission f.o.b. nearest railroad station.

## STEEL SCHEDULE

STRAIGHT BARS					BENT BARS								
Mark	Size	No. Reqd	Length	Location									
G <sub>1</sub>	$\frac{1}{2}$ "	6	50'-4"	S/N Lend 7									
G <sub>2</sub>	$\frac{1}{2}$ "	15	50'-9"	S/N 233 S end 6									
B <sub>1</sub>	$\frac{3}{8}$ "	104	8'-0"	Brackets									
F <sub>5</sub>	$\frac{1}{2}$ "	716	5'-9"	Side wall slab									
M <sub>1</sub>	$\frac{3}{8}$ "	8	50'-4"	Reinfor Lend 7									
M <sub>6</sub>	$\frac{1}{2}$ "	20	50'-5"	Reinfor 233 S end									
K	$\frac{3}{8}$ "	17	8'-0"	Abutments	Mark	Size	No. Reqd	A	B	C	D	Total Length	Location
P	$\frac{3}{8}$ "	306	4'-6"	Fasts									

11	7	500	1.0	1.000
BENT BARS				

A diagram of a rectangular box. The top horizontal edge is labeled 6. The front vertical edge is labeled 6. The bottom horizontal edge is labeled 9/2. A dashed line extends from the bottom-left corner of the box to a vertical line segment labeled A, which is positioned to the left of the box.

Mark	Size	No. Rgd	A	Length	Location
58	$\frac{2}{3}$ "	26	$6\frac{1}{2}$ "	2'-11"	Brackets
55	$\frac{2}{3}$ "	26	$9\frac{1}{4}$ "	3'-4"	Brackets
56	$\frac{2}{3}$ "	26	1'-0"	3'-9 $\frac{1}{2}$ "	Brackets
57	$\frac{2}{3}$ "	26	1'-2 $\frac{1}{2}$ "	4'-3"	Brackets
58	$\frac{2}{3}$ "	26	1'-5 $\frac{1}{2}$ "	4'-9 $\frac{1}{2}$ "	Brackets
59	$\frac{2}{3}$ "	26	1'-8 $\frac{1}{2}$ "	5'-2"	Brackets
50	$\frac{2}{3}$ "	26	1'-11 $\frac{1}{2}$ "	5'-8"	Brackets
51	$\frac{2}{3}$ "	26	2'-2 $\frac{1}{2}$ "	6'-2 $\frac{1}{2}$ "	Brackets
52	$\frac{2}{3}$ "	26	2'-5 $\frac{1}{2}$ "	6'-9"	Brackets

Mark	Size	No. Req'd	Length	Location
B <sub>2</sub>	$\frac{3}{4}" \phi$	104	8'-0"	Brackets

A diagram of a cross-shaped object. The horizontal bar has a width of 1-1/2 inch and a height of 1-6 inch. The vertical bar has a width of 7 inch and a height of 1-3/4 inch. The central square where the bars overlap has a side length of 6 inch.

Mark	Size	No Req'd	Length	Location
S <sub>3</sub>	1"Ø	357	4'-11"	Fascio Girder

The diagram illustrates the dimensions of the fascia girder. It shows a vertical section with a hole of diameter 1"Ø and a horizontal section with a length of 4'-11".

Mark	Size	No. Req'd	Length	Location
P <sub>2</sub>	3" $\phi$	102	4'-6"	Inside of Posts - SW Side

All steel dimensions are given to center line of bars  
All steel to be plain rounds structural grade.

MAINE HIGHWAY COMMISSION  
BRIDGE DIVISION

BRIDGE DIVISION

MATTAWAMKEAG BRIDGE

OVER

MATTAWAMKEAG RIVER

IN THE TOWN OF

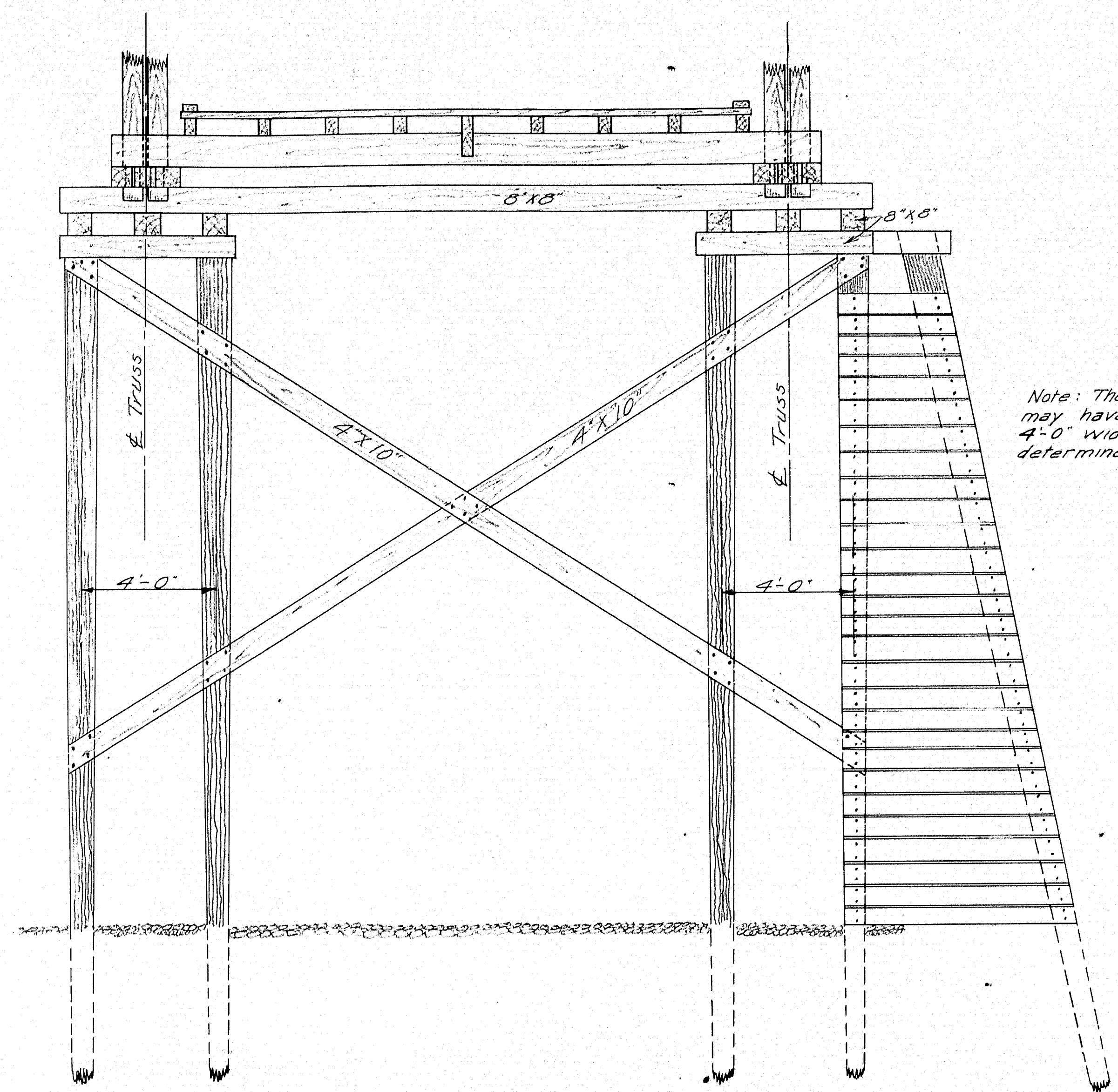
MATTAVAMKEAG

PENOBSCOT CO., ME.

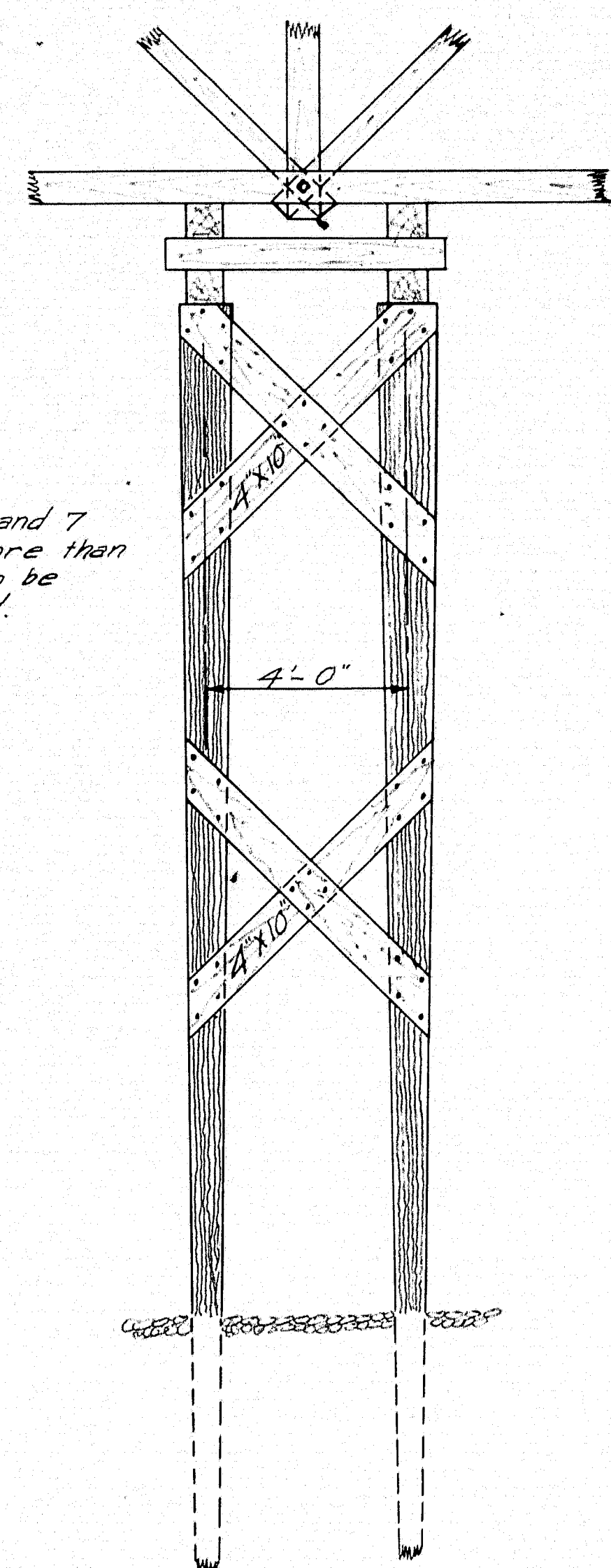
SUPERSTRUCTURE DETAILS

Sheet 3A of 3 Augusta, Me., June 18, 1928.

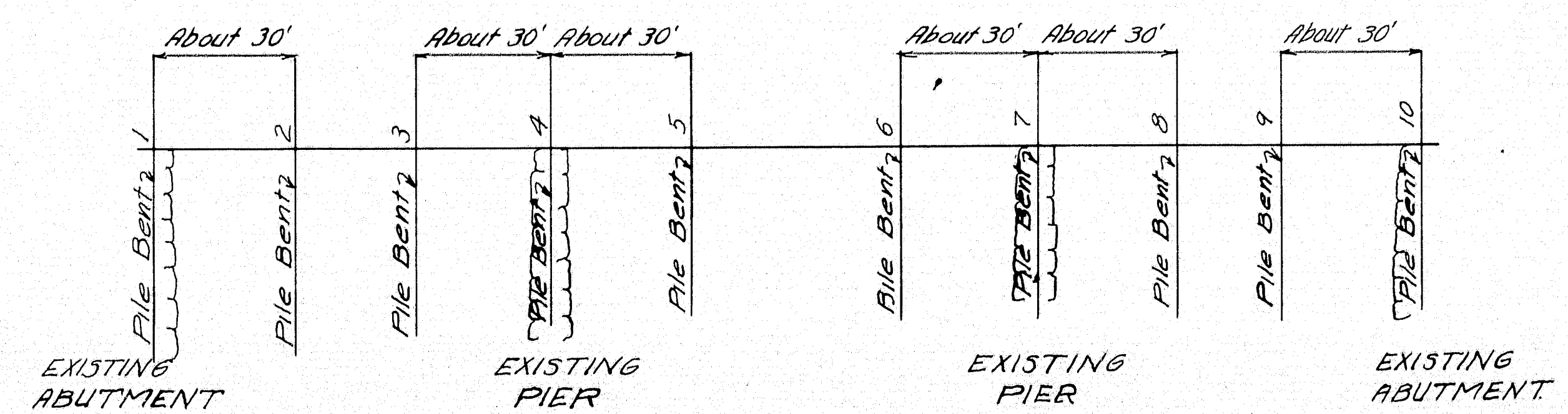




Note: The bents 4 and 7 may have to be more than 4'-0" wide. Width to be determined in field.



Note: The details of a pile bent shown on this sheet typical of construction required to support the existing bridge at a location downstream from the present location. The ice breaker nose is necessary if the period of construction includes late fall or spring months. Approaches will be constructed and traffic maintained over the existing bridge at its new location.



MAINE HIGHWAY COMMISSION  
BRIDGE DIVISION  
**MATTAWAMKEAG BRIDGE**  
OVER  
**MATTAWAMKEAG RIVER**  
IN THE TOWN OF  
**MATTAWAMKEAG**  
**PENOBSCOT CO. ME.**  
Temporary Bridge Details  
E.H.H. August 1st. Mar. 23, 1926

